

date 08.03.2012 – index b

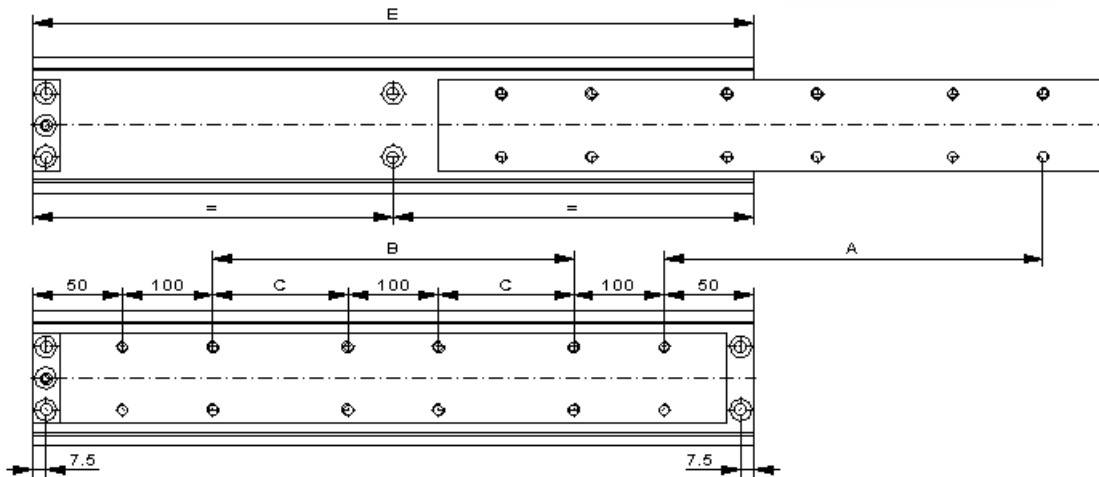
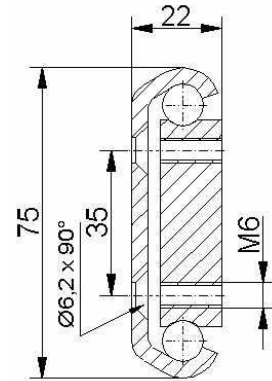
## telescopic slide HG75T

### basic type:

- side mounting
- part extension
- zinc-plated steel
- fixing holes

### costum-made product:

- special lengths
- holes / hole center distances
- additional mounting elements
- combinations



Installation length	Length			hole pattern		weight	travel length	load rating per pair
	Inner beam	B	C	C-profile	Inner beam			
E						kg	A	kg
400	370	100		4	8	3,5	240	280
450	420	150		4	8	4,0	270	290
500	470	200		4	8	4,4	300	300
550	520		75	6	12	4,85	330	310
600	570		100	6	12	5,3	360	320
650	620		125	6	12	5,74	390	315
700	670		150	6	12	6,18	420	310
750	720		175	6	12	6,6	450	300
800	770		200	6	12	7,0	480	290
850	820		225	6	12	7,5	510	280

date 08.03.2012 – index b

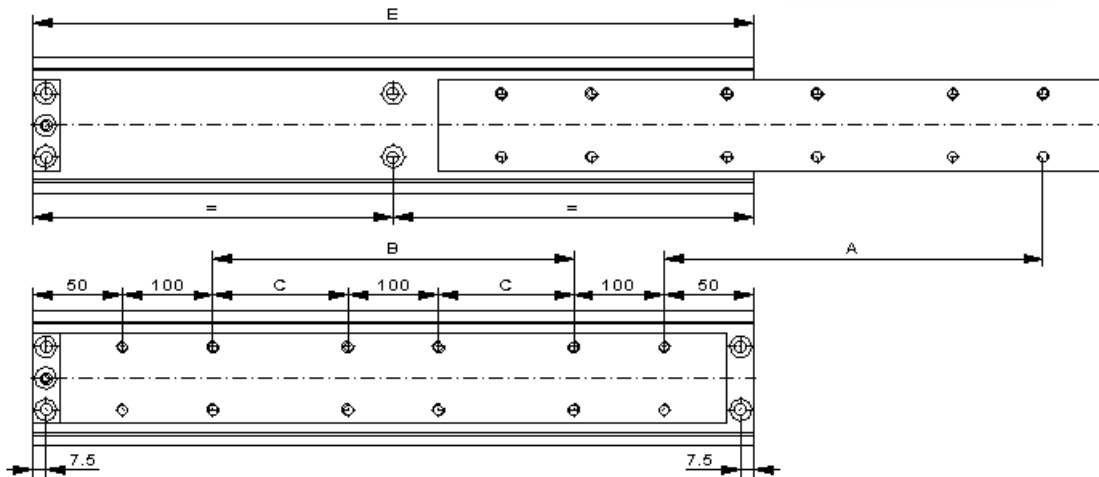
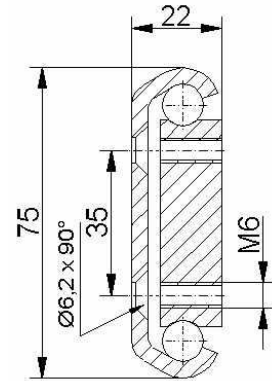
## telescopic slide HG75T

### basic type:

- side mounting
- part extension
- zinc-plated steel
- fixing holes

### costum-made product:

- special lengths
- holes / hole center distances
- additional mounting elements
- combinations



Installation length	Length			hole pattern		weigt	travel length	load rating per pair
	Inner beam	B	C	C-profile	Innen beam			
E						kg	A	kg
900	870		250	6	12	8,0	540	270
950	920		275	6	12	8,4	570	260
1000	970		300	6	12	8,8	600	250
1100	1070		350	6	12	9,7	660	225
1200	1170		400	6	12	10,6	720	200
1300	1270		450	6	12	11,5	780	175
1400	1370		500	6	12	12,4	840	150
1500	1470		550	6	12	13,3	900	120
1600	1570		600	6	12	14,2	960	90